

**Barnsley**

**20  
30**

**The place of possibilities for  
children, young people and  
families Plan (2023-26)**

**Healthy  
Barnsley**

**Learning  
Barnsley**

**Growing  
Barnsley**

**Sustainable  
Barnsley**

**Enabling  
Barnsley**

# Welcome

In Barnsley, we want everyone to start their life well, have the opportunity to learn, develop new skills, achieve their personal potential and have a good life. This means everything from a quality place to call home, good physical and mental wellbeing, access to the best possible local facilities, and a sense of self-worth through diverse education and secure employment opportunities. ([Barnsley 2030](#))

Welcome to the latest edition of the Children, Young People's and Families Plan, prepared by the Children and Young People's Trust.

The purpose of this plan is to set out the Trusts 8 ambitions and identified priorities to contribute to the vision set out in Barnsley 2030, the borough's long term plan.

The last couple of years have been marked by the global pandemic and we know that the impact on children, young people and families has been significant. This next period will also bring challenges, including the impact of the cost of living crisis on people and businesses, ongoing health inequalities, pressure on public sector budgets and workforce shortages.

These 8 ambitions are the Trusts commitments to the children, young people, parents, carers, staff and volunteers that make up our communities, that we will continue to work together to improve outcomes.

We are so proud that our children's workforce has shown passion, commitment and dedication and despite the challenges the sector has continued to deliver tremendous work every day in our communities, to change the lives of children for the better.

By working together we have laid solid foundation for system based on early help, with improved access to services including mental health services; and a stronger systems for coordinated support for the children and families who need our help most.

The children's workforce is our strongest asset and we will continue to support the sector to champion inclusivity, innovation and collaboration to make Barnsley the place of possibilities.

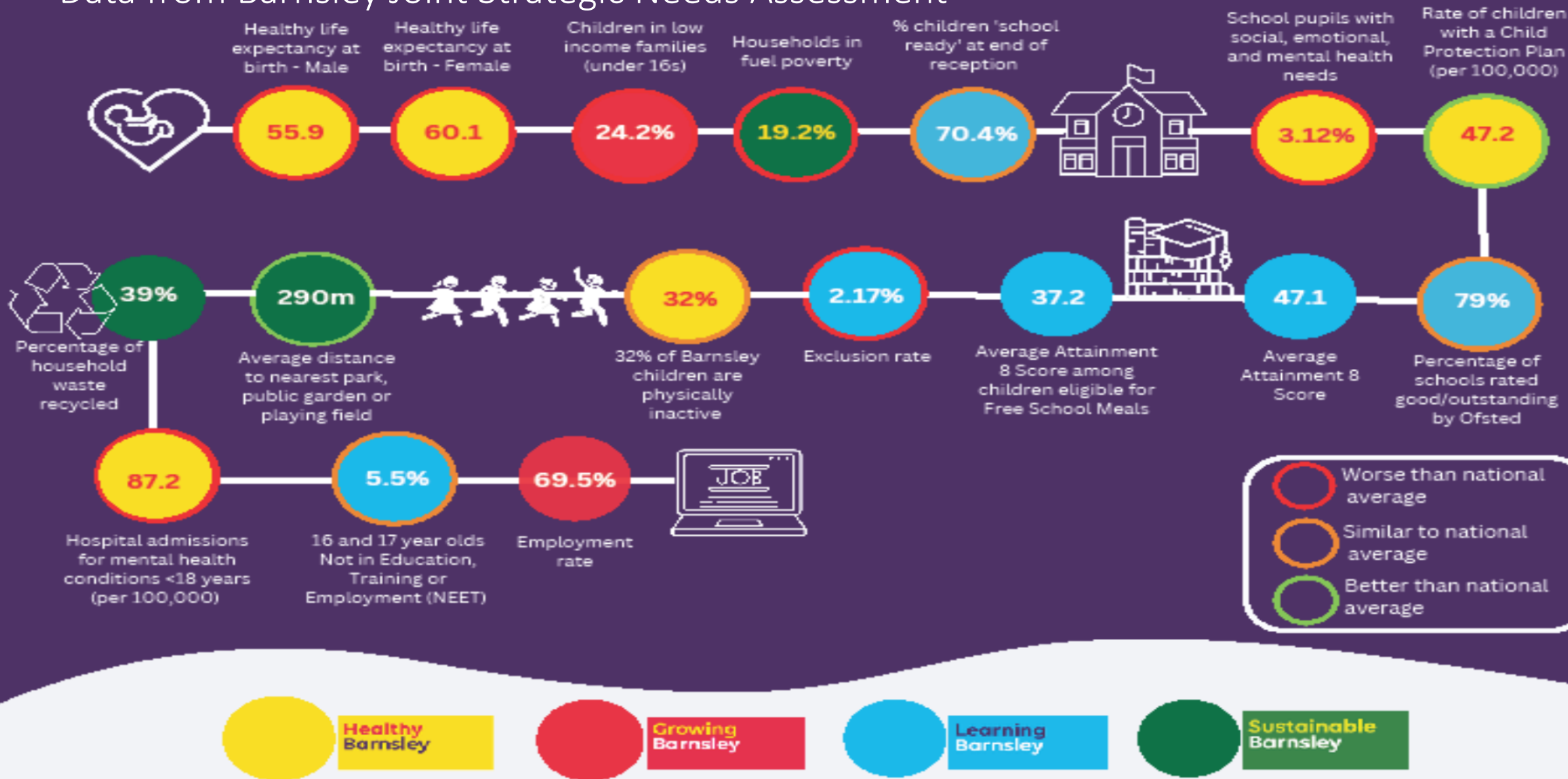


**BARNSLEY**  
Metropolitan Borough Council

The Children and Young People's Trust  
brings together partners from across health, social care, criminal justice, safeguarding, education, and the  
community and voluntary sector.

# Current position

## Data from Barnsley Joint Strategic Needs Assessment



# What Matters Most to Young People in Barnsley?

Every year our Youth Council helps to facilitate Barnsley's contribution to Make Your Mark so that young people can have a say and be heard. The results from 2022 identify the top 3 issues in Barnsley for young people are:

1. Jobs, Money, Homes and Opportunities
2. Health & Wellbeing
3. Environment

In addition to the results of Make Your Mark, the [Director of Public Health Annual Report \(2021\)](#) presents the voices of children and young people in 'What matters to me, now' showcasing the priorities identified by young people pre and post pandemic. The importance of family, home, friendship and belonging came out strong, as did being active, outdoor space and the environment.



**Barnsley – the place  
of possibilities.**

Now more than ever young people told us that they valued having fun, being creative and enjoying experiences, holidays and celebrations.

# Our Engagement Promise

Sharing information and involving children, young people and families in what we do and how we do it is key to improving outcomes. This is why as a Trust we are committed to ensuring we:

- Make sure information is accessible and jargon free
- Include everyone, and we listen and learn from our staff and communities
- Use age appropriate and creative ways to engage children and young people.
- Keep it simple and be honest about what you can influence
- Value equality and the diversity of local communities
- Are open and transparent with what we know and what we have done and why

For the families we work with we will work hard to involve you as much as possible, building on your strengths to shaping support plans and approaches that are best for you.



**Barnsley – the place  
of possibilities.**

# Healthy Barnsley

## CYPT Ambition (1)

Children, young people and their families lead healthy and happy lives

This ambition will contribute to the work of Barnsley Health & Wellbeing Board, Barnsley Place Partnership and the Mental Health, Learning Disabilities and Autism Partnership

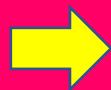


Barnsley – the place of possibilities.

# Our Priorities (for Ambition 1)

- I. To provide Families with the Know How – so they can find the information they need to look after themselves and make the most of opportunities and services available.
- II. To provide opportunities to build resilience – so that our children, young people and their families can connect, have fun and thrive together.
- III. To embed our Early Help Approach – so that children, young people and their families are supported on a whole range of social, health and educational issues, as soon as problems emerge or re-emerge, to reduce inequalities.
- IV. To strengthen our education, health and care partnerships – so that our systems and services, informed by the voice of children, young people and families, work seamless together.

Boards  
Responsible for  
Delivery



Starting Well, Growing Well and Moving On  
Special Educational Needs & Disabilities Oversight Board  
CYP Emotional Health & Wellbeing Group

# Healthy Barnsley

## CYPT Ambition (2)

Children and young people are safe and protected.

This ambition will contribute to the work of Barnsley's Children's Safeguarding Partnership, Safer Barnsley Partnership and the Mental Health, Learning Disabilities and Autism Partnership

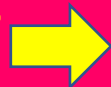


Barnsley – the place of possibilities.

# Our Priorities (for Ambition 2)

- I. To learn from national and local reviews to deliver safer outcomes for children and young people
- II. To keep children and young people safe inside home – by addressing domestic abuse, parental substance misuse, parental mental health and child neglect.
- III. To keep children and young people safe outside home – by tackling bullying, online harm, stalking and harassment, child exploitation.
- IV. To intervene swiftly when children need help and protection, with high quality interventions to improve outcomes and reduce harm
- V. To offer young people alternatives to crime and anti-social behaviour to divert young people away from criminal justice system
- VI. To keep children, young people and families stay together. When this is not possible we will develop new models of accommodation through the strengthening of our commissioning arrangements, in order to place children locally.

**Boards Responsible for Delivery**



**Strengthening Children's Services Development Board  
Combating Drugs Partnership Board, Domestic Abuse Partnership Board, Youth Crime and Anti-social Behaviour Board, CYP Emotional Health & Wellbeing Group**

# Learning Barnsley

## CYPT Ambition (3)

Children and young people get a good education, are ambitious and able to reach their potential

This ambition will contribute to the work of the Inclusive Economy Board, Barnsley Place Partnership and the Mental Health, Learning Disabilities and Autism Partnership



**Barnsley – the place of possibilities.**

# Our Priorities (for Ambition 3)

- I. To champion world class education opportunities for all CYPF, ensuring that we meet the needs of vulnerable and disadvantaged groups
- II. To secure high quality provision, widen local opportunities and promote equalities
- III. To support families to provide an enriching home learning environment
- IV. To help young people aim high by championing high quality careers education and guidance that raises their aspirations, skills, qualifications, and aptitudes so that they fulfil their full potential.
- V. To provide access to high quality cultural, sporting and social opportunities and expand horizons and international experiences.
- VI. To support every young person to be digitally, culturally and financially literate.

**Boards  
Responsible for  
Delivery**



**Barnsley Schools Alliance**  
**Starting Well, Growing Well and Moving On**  
**Special Education Needs & Disabilities Oversight Board**  
**Inclusive Economy Board**



# Learning Barnsley

## CYPT Ambition (4)

Children and young people are ready for work and are able to gain and progress in work.

This ambition will contribute to the work of the Inclusive Economy Board, Barnsley Place Partnership and the Mental Health, Learning Disabilities and Autism Partnership's

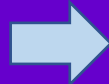


**Barnsley – the place  
of possibilities.**

# Our Priorities (for Ambition 4)

- I. To strengthen the links between the borough's employers and learning providers to help young people understand more about the world of work
- II. To promote and encourage lifelong learning by enhancing post-16 and post-19 education, volunteering, employment, and training provision
- III. To improve employment opportunities for our young people that are care leavers and those who have additional needs.
- IV. To promote inclusion and provide support to young person at risk of becoming NEET (not in education, employments or training)

**Boards  
Responsible for  
Delivery**



**Barnsley Schools Alliance**  
**Special Education Needs & Disabilities Oversight Board**  
**Starting Well, Growing Well and Moving On**  
**Inclusive Economy Board**

# Growing Barnsley

## CYPT Ambition (5)

All providers of Children and Family Services are valued and supported to thrive

This ambition will contribute to the work of the Barnsley Place Partnership, Stronger Barnsley Partnership, and Partnership Workforce Development Plans.



Barnsley – the place of possibilities.

## Our Priorities (for Ambition 5)

- I. To develop and grow the Children and Young People's Provider Network
- II. To increase the level of funding brought into Barnsley to build the children and family sector.
- III. To grow, support and shape the sector to deliver service integration and meet workforce development needs.
- IV. To develop a stronger digital offer to promote all our children, young people and family services.

**Boards  
Responsible for  
Delivery**

**Voluntary Sector Strategy Group,  
Starting Well, Growing Well and Moving On  
Children & Young People's Commissioning**

# Growing Barnsley

## CYPT Ambition (6)

Barnsley is a child, young person and family friendly place to live, work and visit

This ambition will contribute to the work of the Principal Towns Programme Board, Housing Board, Fusion Partnership and Barnsley's Travel Strategy.



**Barnsley – the place of possibilities.**

## Our Priorities (for Ambition 6)

- I. To support young people to develop a sense of pride and place.
- II. To embed the interests & needs of children, young people and families into Housing, Regeneration & Investment plans to maximise the impact of developments and positively contribute to outcomes.
- III. To work with children, young people and families to make our urban and local town centre be safe and welcoming places as well as ensuring we have a wide mix of facilities and amenities available for CYP & families.
- IV. To promote and increase opportunities and access to Barnsley's art, sport, music, culture and heritage offer.
- V. To influence and support a safe, reliable and accessible transport network.

**Boards  
Responsible for  
Delivery**

**Principal Towns Programme Board  
Housing Board, Fusion Partnership**

# Sustainable Barnsley

## CYPT Ambition (7)

To protect our place and planet for future generations

This ambition will contribute to the ambition to be net Zero Carbon by 2045



**Barnsley – the place of possibilities.**

## Our Priorities (for Ambition 7)

- I. To promote initiatives and project across all partners, that contribution to the borough's ambition to become net Zero Carbon by 2045.
- II. To engage children, young people and their families to improve knowledge and understanding of climate change and to take action to reduce, reuse and recycle .

**Boards  
Responsible for  
Delivery**

Positive Climate Partnership

# Sustainable Barnsley

## CYPT Ambition (8)

For children, young people and families are proud and active where they live

This ambition will contribute to the work of the Stronger Communities Partnership and Barnsley Health & Wellbeing Board



**Barnsley – the place of possibilities.**

## Our Priorities (for Ambition 8)

- I. To influence and support the development of our parks, open and green spaces so children, young people and families can enjoy public outdoor spaces.
- II. To influence, support and promote active travel programmes across the borough so that cycling and walking become part of everyday life.
- III. To support initiatives for developing community capacity and promoting community wealth building.
- IV. To work with the voluntary and community sector and support social action.

**Boards  
Responsible for  
Delivery**

Principal Towns Programme Board  
Area Councils , Active in Barnsley Partnership

# Enabling Barnsley

## CYPT Ambition (9)

The Trust will support the system to achieve more and better outcomes

## Our Priorities (for Ambition 9)

- To embed the Voice of stakeholders into all aspects of service development
- To improve partnership data & intelligence gathering, and analysis to support all our delivery groups
- To increase capacity and develop the workforce to deliver a whole systems approach
- To identify barriers and challenges that hinders progress of delivery groups
- To develop improved ways to communicate across the trust to reduce duplication



Barnsley – the place  
of possibilities.

# Visual – To Be Developed

**Healthy – Ambition 1 Children, young people and their Families lead healthy and happy lives**

**Strategic Delivery groups are: Starting Well, Growing Well and Next Oversight Board, CYP Emotional Health & Wellbeing Group, Special Educational Needs & Disabilities Oversight Board**

**Healthy – Ambition 2 Children and young people are safe and protected from all forms of harm**

**Strategic Delivery Groups are:**



**Barnsley – the place  
of possibilities.**

# Implementing & Delivering the plan

This plan draws together the ambitions and priorities from across the system. Further background and details to the ambitions and priorities can therefore be found in the following:

[Barnsley Health and Wellbeing Strategy 2021 - 2030](#)

[Barnsley Place Health & Care Strategy \(in development\)](#)

[Early Help Strategy 2022-2027](#)

[Barnsley Mental Health and Wellbeing Strategy 2022-2026](#)

[Send Strategy 2022 - 2025](#)

[Autism Strategy \(in development\)](#)

[Carers Strategy](#)

[Safer Barnsley Strategy](#)

[Youth Justice Strategy](#)

[Barnsley School Alliance Education Improvement Strategy-2022-2025](#)

[Employment and Skills Strategy - More and better jobs](#)

[MORE AND BETTER JOBS 2021-2024](#)

[Barnsley Transport Strategy](#)

[Climate Change](#)

[OTHERS>>>>>>to be added](#)

Updates from across the system will be collected periodically providing the opportunities to track progress and manage risks and challenges.



**Barnsley – the place  
of possibilities.**



# System Diagram from the perspective of TEG for the delivery of the Children & Young People's Plan

